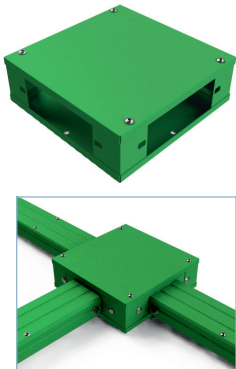


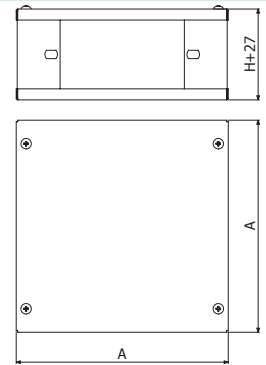


CDT



	H		A		GSE	
	mm	inch	mm	inch	REF.	kg/ud
CDT 40	40	1 4/7"	203	8"	2/0191	0,97
CDT 60	60	2 3/8"	203	8"	2/0192	1,24
CDT 80	80	3 1/7"	283	11 1/7"	2/0193	2,10
CDT 100	100	4"	383	15"	2/0194	3,59
CDT 100X400	100	4"	483	19"	2/3610	3,40
CDT 100X600	100	4"	683	26 8/9"	2/4203	6,50

x/100 x B1 (2/4356) +

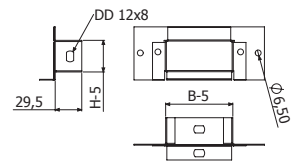


AC H40



	H		B		GSE	
	mm	inch	mm	inch	REF.	kg/ud
AC 40/40X80	40	1 4/7"	80	3 1/7"	2/0195	0,09
AC 40/40X120	40	1 4/7"	120	4 5/7"	2/0196	0,12

3/100 x B1 (2/4356)

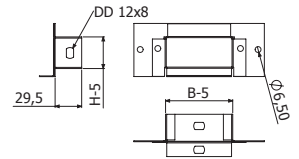


AC H60



	H		B		GSE	
	mm	inch	mm	inch	REF.	kg/ud
AC 60/40X80	40	1 4/7"	80	3 1/7"	2/0197	0,13
AC 60/40X120	40	1 4/7"	120	4 5/7"	2/0198	0,17
AC 60/60X120	60	2 3/8"	120	4 5/7"	2/0199	0,13

3/100 x B1 (2/4356)

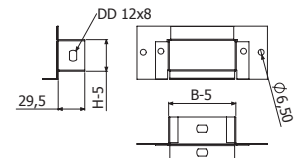


AC H80



	H		B		GSE	
	mm	inch	mm	inch	REF.	kg/ud
AC 80/40X80	40	1 4/7"	80	3 1/7"	2/0200	0,17
AC 80/40X120	40	1 4/7"	120	4 5/7"	2/0201	0,24
AC 80/60X120	60	2 3/8"	120	4 5/7"	2/0202	0,25
AC 80/80X140	80	3 1/7"	140	5 1/2"	2/0203	0,25
AC 80/80X200	80	3 1/7"	200	8"	2/0204	0,21

3/100 x B1 (2/4356)



AC H100



	H		B		GSE	
	mm	inch	mm	inch	REF.	kg/ud
AC 100/40X80	40	1 4/7"	80	3 1/7"	2/0205	0,37
AC 100/40X120	40	1 4/7"	120	4 5/7"	2/0206	0,24
AC 100/60X120	60	2 3/8"	120	4 5/7"	2/0207	0,38
AC 100/80X140	80	3 1/7"	140	5 1/2"	2/0208	0,31
AC 100/80X200	80	3 1/7"	200	8"	2/0209	0,44
AC 100/100X200	100	4"	200	8"	2/0210	0,37
AC 100/100X300	100	4"	300	12"	2/0211	0,76
AC 100/100X400	100	4"	400	16"	2/0212	0,39
AC 100/100X600	100	4"	600	24"	2/4867	0,54

3/100 x B1 (2/4356)

